



UNBEATABLE TOUGHNESS

LEADING MANUFACTURER OF ROCK BREAKER



Best In Class:
Power to Weight Ratio



Enhanced
Durability



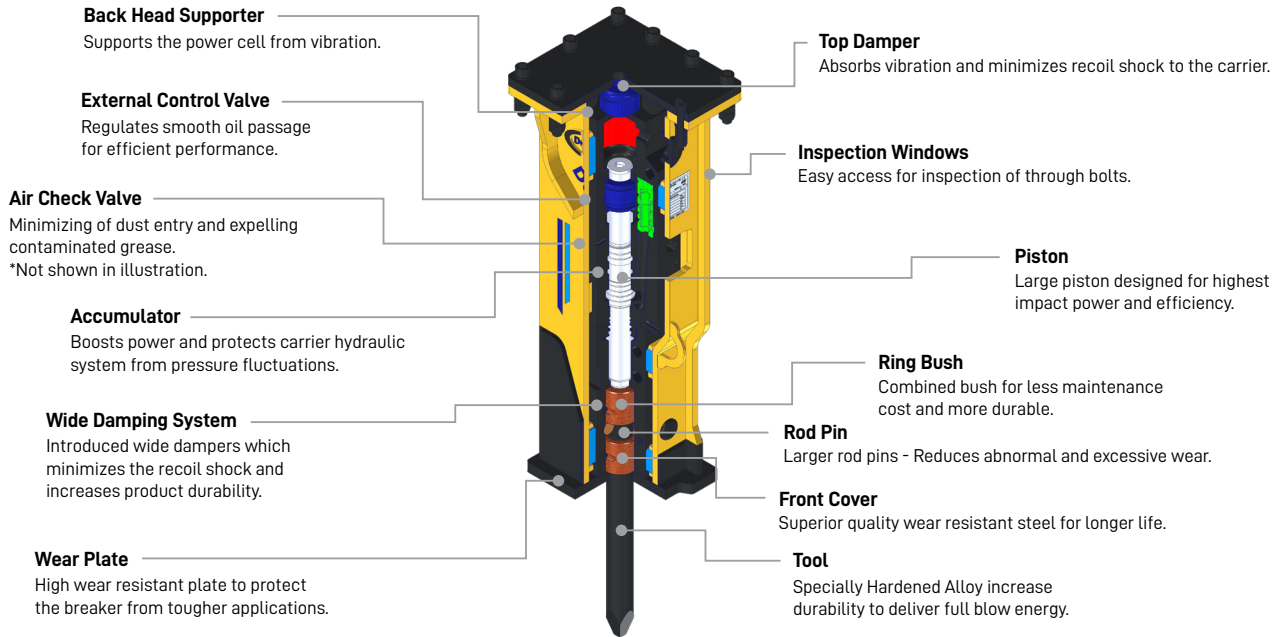
Easy
Maintenance



Optimum
Productivity

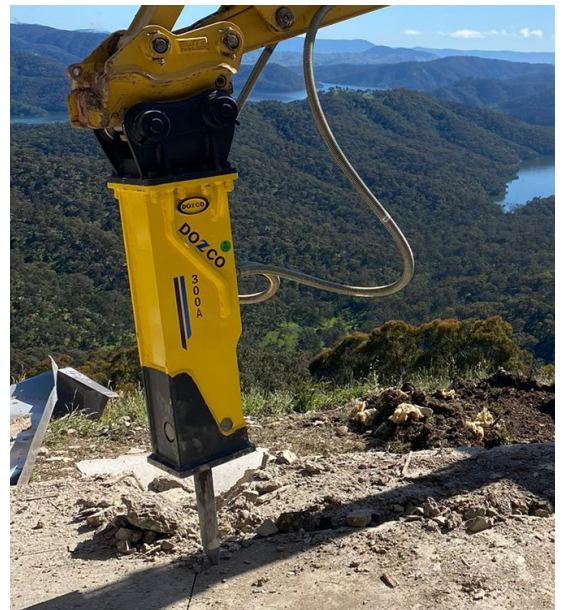


DESIGN & FEATURES



SPECIFICATIONS

	Applications			Demolition, Agriculture, Trenching, Breaking Asphalt and Concrete etc.
	Applicable Machines			Mini-Excavators, Backhoes, Skid Steer Loaders
Specifications	Model		Unit	DOZCO 300A
	Operating Weight	Box	Kg	215
		Side		166
		Top Split		-
	Height (Inc. Tool)	Box	mm	1424
		Side		1180
		Top Split		-
	Tool Diameter		mm	53
	Tool Length		mm	550
	Optimal Oil Flow		lpm	25 - 50
	Setting Pressure		bar	150
	Operating Pressure		bar	90 - 120
	Return Line Pressure		bar	10
	Impact Rate		BPM	600 - 1100
	Bottom Plate Thickness (HB)		mm	20
Sallient Features	Control Valve Type			Internal
	Applicable Carrier		ton	2 ~ 4
	2 Stroke Control		-	No
	Accumulator		-	No
	Auto Greasing		-	Optional
	Anti Blank Firing (ABF)		-	No



DOZCO (INDIA) PVT. LTD.

CONSTRUCTION & MINING - EQUIPMENT & PARTS

CORPORATE OFFICE:

No. 243, D - Block, IDA, Auto Nagar,
Vishakapatnam- 530 012, India.
Tel: +91 891 276 9681 | Email: info@dozco.com

REGISTERED OFFICE:

No. 6, Waterloo Street, 3rd Floor,
Kolkata- 700 069, West Bengal, India.

MANUFACTURING PLANT:

Plot No. 90 & 91, G-Block, Auto Nagar,
Visakhapatnam- 530 012, India.